



**PROJECT
EXPERIENCE**



OUR MISSION

Provide our clients professional services utilizing innovative technologies and proven management systems

TABLE OF CONTENTS

<u>ABOUT US</u>	4
<u>FIRM LEADER</u>	6
<u>ADDITIONAL CAPABILITIES</u>	6
<u>PROJECT EXPERIENCE</u>	8

ABOUT US

LBYD Federal is an 8(a) Small Disadvantaged Business providing multi-discipline engineering, technical, management, and professional services to federal, commercial, and private sectors.



LBYD Federal is a wholly owned subsidiary of CIRI Development Corporation d/b/a North Wind Group. North Wind Group is wholly owned by Cook Inlet Region Inc. (CIRI), an Alaska Native Corporation (ANC). Our vision is to be a nationwide leader in the engineering services industry providing creative and practical solutions to complex problems.

- Maintains more than 30 office locations across the United States and its territories
- Proven and mature corporate infrastructure in place for over 25 years and implemented on thousands of projects
- Earned Value Management System
- Over 1,400 engineers, scientists, management, construction, and administrative personnel across the North Wind Group of companies

OUR SERVICES



REPRESENTATIVE CLIENTS

- U.S. Forest Service
- Bureau of Land Management
- Federal Aviation Administration
- Department of Energy
- U.S. Air Force
- Department of Justice
- U.S. Army Corps of Engineers
- U.S. Navy
- U.S. Coast Guard
- Bureau of Reclamation
- National Park Service

LOCATIONS



FIRM LEADERS



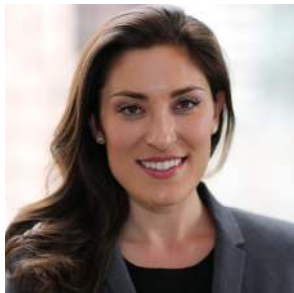
SCOTT HARTFORD PE

President



MARK SWANTKO

Business Development



**NICOLE HARIS PE,
LEED AP BD+C**

Program Integration



**CHRIS CHANNELL
MSCE, PE**

Architecture



**MICHAEL
MCCAULEY PE, SE**

Structural Engineering



**SAIGE BALLOCK-
DIXON PE, PMP**

Environmental Engineering



BRUCE PUFFER PE

Civil Engineering



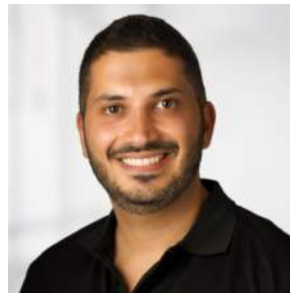
BRIAN PATALON PE

Mechanical Engineering



KEN GILBERT PE

Fire Protection Engineering



MARIO HADDAD PE

Electrical Engineering

SMALL BUSINESS WITH LARGE BUSINESS PROCESSES

- Licensed Professional Engineers throughout the United States
- Proven project management system
- ISO-9001 and NQA-1 Quality Program
- Extensive number of contract vehicles and teaming partners
- Designs completed in-house
- Specialists in all phases of the design-build process
- Experience with multiple federal organizations (DoD-all branches, DOE, DOI, EPA, USACE, BLM, USFS, NASA, FAA) and large-scale commercial projects

8(a) certified, Small Disadvantaged Business

080130091
DUNS

7KJB1
CAGE

541330 541370 541360
RELEVANT NAICS CODES

47QRAD20D8185
GSA OASIS SB 8(a) Contract Pool #

ADDITIONAL CAPABILITIES

- Infrastructure/Facility Modification Design and D&D Support
- Water and Wastewater Treatment System Design
- Utility Design (roads, power, water, wastewater, etc.)
- Structural Design
- Environmental System Design
- Soil Treatment/Removal Systems
- Landfill Design and Closure
- Groundwater Treatment Systems
- Remedial Design/Remedial Actions
- NEPA/EIS/CERCLA/RCRA
- Electrical System Design (<600 Volts)
- Instrumentation and Controls
- HVAC Commercial and Industrial
- Project Engineering and Management
- Construction Oversight and Inspection
- Sustainable Buildings/Energy Audits
- Geotechnical Site Investigation, Analysis, and Design
- SPCCs and SWPPPs
- Air Permitting Sampling (air, water, soils, rocks)
- Value Engineering

CONSOLIDATED COMMUNICATIONS FACILITY (COCOM)

MacDill Air Force Base, Florida

SERVICES PERFORMED

Civil Engineering, Structural Engineering

The Consolidated Communications Facility (COCOM) is a modern efficient and appropriately sized facility that houses telephone, data circuit and networking system components directly supporting the 6th Air Refueling Wing and its mission partners. Demolition of an existing building was necessary to make room for the new COCOM Facility. Along with the design of the two-story, 29,984 sf building, the renovation of two additional facilities was required to relocate Family Support Center activities and outlying Squadron Communication Functions. The COCOM complies

with DoD Anti-Terrorism/Force Protection requirements per Unified Facilities Criteria.

MacDill AFB is in a Hurricane Prone Region as defined in ASCE 7-05. In order to protect the second floor data equipment in the event of a hurricane, the roof system was also a concrete composite slab and beam system.



MCAS BEAUFORT AIRCRAFT HANGAR AND PARKING GARAGE

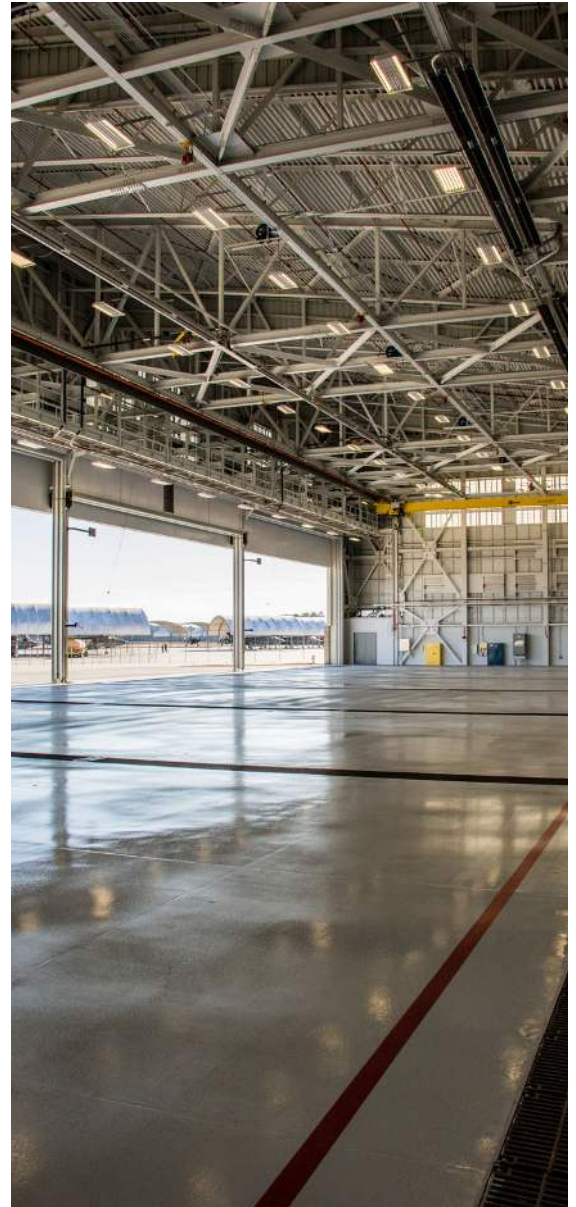
Beaufort, South Carolina

SERVICES PERFORMED

Structural Engineering, Civil Engineering

This project includes the design and construction of a multi-story Type I operational aircraft maintenance facility for sixteen F-35(B) and/or F-35(C) aircraft. The facility shall include an aircraft maintenance hangar bay designed to accommodate six F-35(B) aircraft, access apron designed to accommodate twelve parked F-35(C) aircraft, shops and maintenance administration, squadron administration and operations, including data network areas, pilot brief and debrief rooms, and supporting utilities. The project also includes the

design and construction of a multi-story parking garage. Site improvements include rerouting of existing utilities, utility connections, POV parking, site lighting, security fencing with associated turnstiles and gates, sidewalks, landscaping, and ATRP features. The existing aircraft concrete parking ramp will be restriped and modified to support the F-35(C) operation.



SPECIAL OPERATIONS COMMAND SOUTH (SOCSOUTH)

Homestead Air Reserve Base, Florida

This project consists of the design and construction of a three-story, 123,842 SF Headquarters Facility for Special Operations Command South (SOC SOUTH). The facility includes general purpose administrative areas, a Secure Compartmentalized Information Facility (SCIF) and sensitive item storage.

SERVICES PERFORMED

Structural Engineering, Civil Engineering



SPECIAL OPERATIONS COMMAND CENTRAL (SOCCENT) AND CULTURAL ENGAGEMENT GROUP (CEG) FACILITY

MacDill Air Force Base, Florida

SERVICES PERFORMED
Structural Engineering, Civil Engineering

This Design-Build project consists of a 38,363 SF, two-story facility including administrative space, warehouse space and related support space. The structure is steel framed on a concrete slab on grade and spread footing foundation with masonry walls and a standing seam metal roof system. Civil designs for the project includes associated site work, contaminated soil remediation, de-watering, parking, grading, associated site utilities and landscaping and irrigation.



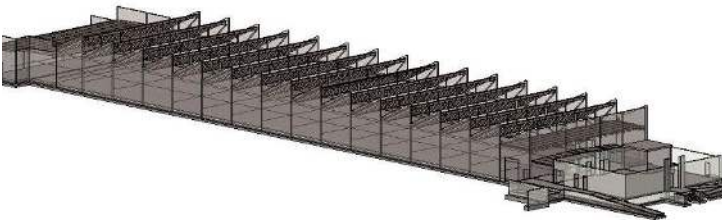
COMBAT WEAPONS TRAINING FACILITY

Patrick Air Force Base, Florida

SERVICES PERFORMED

Structural Engineering, Civil Engineering

This project consists of a 34,000 SF, Combat Weapons Training Facility including a 14 point, 100 meter, fully contained firing range for small arms training capable of accommodating both frangible and lead ammunition. The project also includes a Combat Arms Training and Maintenance Area Building for use as a training classroom, weapons maintenance area, ammunition storage, weapons vault and administration area.



BLM A-E IDIQ CONTRACT

Idaho, Utah, Montana, Wyoming, North Dakota, South Dakota

SERVICES PERFORMED

Highway Design, Environmental Compliance, Geotechnical Engineering, Bridge and Structural Design, Hydraulic and Hydrologic Engineering, Pavements and Materials, Survey and Mapping, Right-of-Way and Utility, Transportation Planning

LBYD Federal’s BLM IDIQ contract is to provide A-E services for a broad range of facilities, assets, and projects located in Idaho, Utah, Montana, Wyoming, North Dakota, South Dakota, and the National Interagency Fire Center. Projects consisted of more than 150 task orders for large and small projects managed concurrently in different geographical areas.

- ✓ Long term partnering relationship with BLM
- ✓ Experience managing and delivering numerous projects to the BLM in excess of \$50 million
- ✓ Long-term working relationships of over 20 years among members of the Team
- ✓ Over 2,100 A/E, technical, project management, and administrative personnel to draw from
- ✓ Over 35 team offices to serve all geographic areas of the 2 states specified in the RFP to provide efficient, cost-effective, readily available resources within a half-day or less of travel time to most project sites





CONTACT US

bd@northwindgrp.com